

# PT. AMARTA JAYA TELEKOMINDO

## Company Profile



“Committed to deliver Superior Quality, Timely & Professionally”





# CONTENT

The Company

Vision & Mission

The Management

The Staff

Organisation

Business Partners & Clients

Services

Site Surveys, SITAC& Permits

Civil Works

Outside Plant (OSP) System Design, Specification & Installation

Fiberization & Optical Access Network Installation

IT & Electronic Low Voltage System Solution

CCTV Supply & Installation

Video Management System Design & Installation

Command Center Design, Construction & Installation

Telecommunication Engineering Design & Construction CME Tower

IT Equipment Supply

Fiber Optic Cables Supply

Project Coverage



# THE COMPANY



P.T Amarta Jaya Telekomindo is Contracting & Trading Company specialized in Telecommunication, IT Infrastructure, and System Solutions with its Head Office in Jakarta, Indonesia. Established as Indonesian Company under the Law of Republic of Indonesia. The Company owned and managed by a group of Professionals specialising in Telecommunication and IT Technology. The Company was originally developed as diversification of TJS Telecommunication & IT Group of Companies.

The Professional Staff possess a wide range of Background, Experience and Academic Qualifications as reflected in the Scope of Services which the company offers.

Together with our business Partners and Principles, the company practices in the development fields of Telecommunication & IT Technology Infrastructure, Multimedia Communications, Electronic Low Voltage System Solutions (Building Automation, Hotel Management & Operations System Solutions), CME Tower Constructions, Outside Plants, Main Switches Office, IT Equipment, Integrated Command Center & Video Management System, and the respective Facilities.



# VISION & MISSION



## VISION

To be the first preferred Contractor and Supplier for all kind of Telecommunication & IT Infrastructure, Building Automation and Electronic Low Voltage System Solution projects in Indonesia.

## MISSION

To support our Clients and Customers in achieving their business objectives by providing added value Services and System Development Solutions through our Core Values;

**Excellence:** We strive for quality assurance, continuously evolve, and utilizing advanced technologies.

**Teamwork:** We insist on mutual respect, cooperation and mutual encouragement to achieve individual's potential

**Integrity:** We act with reliability, trustworthy and fairness

**Commitment:** We are fully dedicated to delivering our objectives through the most efficient use of resources and compliances

**Sustainability:** We are committed to safeguarding all customers, including the health and safety of our employees, society and the environment as a whole

**Accountability:** We are fully accountable for carrying out our responsibilities in accordance to the values and government principles





# THE MANAGEMENT

P.T Amarta Jaya Telekomnindo has developed its skills from the expertise, qualifications, and experience of its management and professional staff practicing in contracting services businesses. the Management Team has been designed solely to serve the purpose of delivering high quality of service and equipment supply to our clients, while at the same time thriving to achieve minimal standard of defect which able to translate all achievements into higher value for money to Customers.

In short, the Management Team is committed to running highly professional way of operational management System and project implementation, in order to deliver excellent quality of service & equipment supplied, which in turn translates into a highly competitive pricing and much higher level of Client satisfaction trough the following Organisation Structure:



# THE STAFF

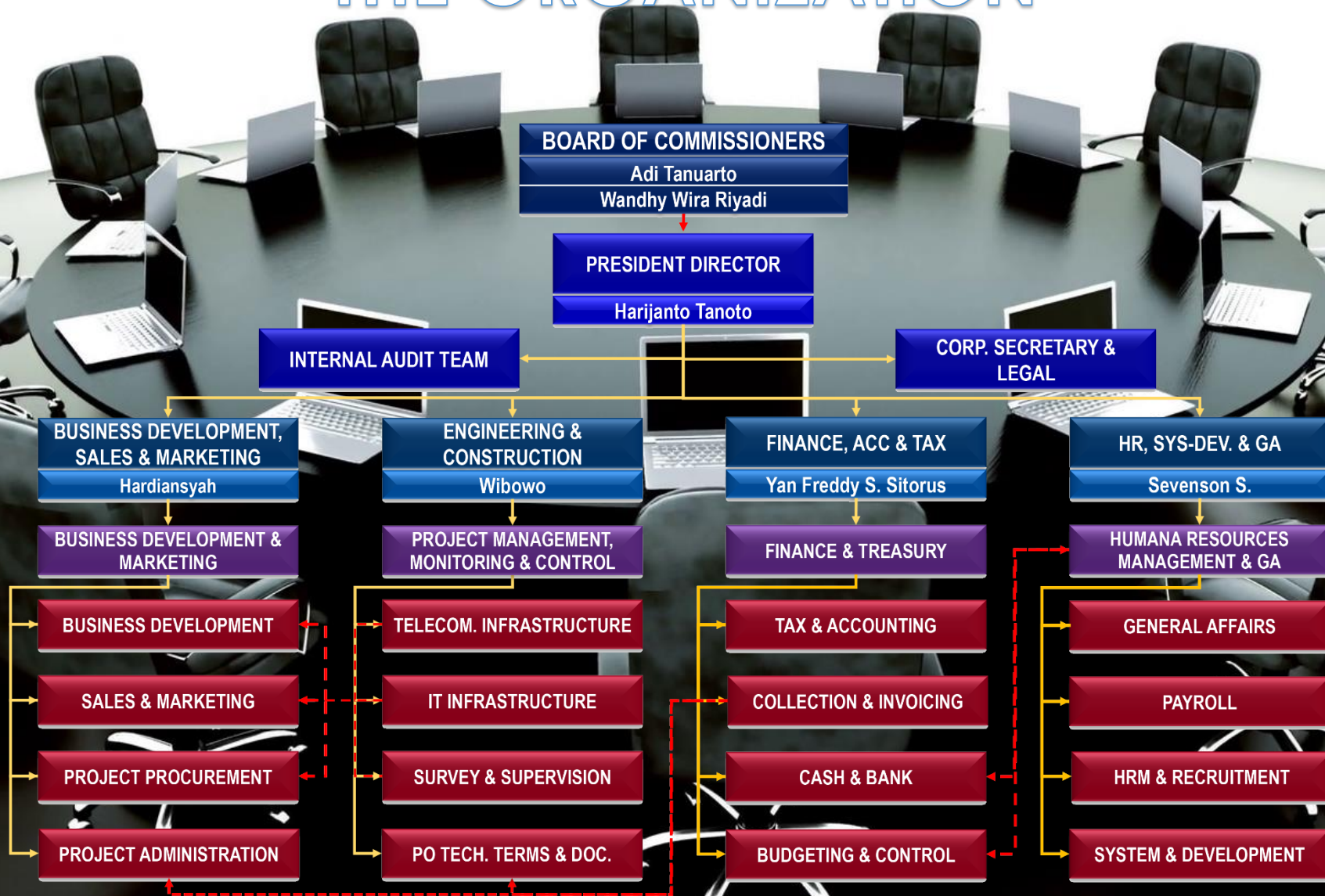
P.T Amarta Jaya Telekomindo expertise team includes permanent staff, associates, advisors and recruited personnel. Our permanent expert staff are professionally qualified in the fields making up the company's scope of services. Our associates and advisors are all independent professionals or experts from both international and national who regularly assist the company on specific projects.

Our Professional Staff includes:

- ✓ Telecommunication Technology Specialist
- ✓ Signal Processing Engineer
- ✓ Information Technology Engineer
- ✓ Civil-Structural Engineer
- ✓ Computer Science Engineer
- ✓ Mechanical – Electrical Engineer
- ✓ Electronic Engineer
- ✓ Project Management Specialist
- ✓ Computer Engineering & Networking Specialist



# THE ORGANIZATION





# BUSINESS PARTNERS & CLIENTS

As of the Scope of Services, and together with our business partners, P.T Amarta Jaya Telekomindo continuously seeks to offer the very best Telecommunication Engineering and Construction Services, and equipment supply to many different Clients by ensuring that the scope of services is individually tailored to the requirements of each Clients. The form of business partner is of particular importance in supporting high standard services where local resources are very limited, providing total satisfaction to our clients, and promoting the exchange of technology and knowledge. Our on going business partners and clients are:

EnGenius<sup>TM</sup>



iFORTE

SUNWAY<sup>®</sup>



SP



collinear





# SERVICES

P.T AMARTA JAYA TELEKOMINDO offers a wide range of Telecommunication Engineering & Construction, IT Infrastructure Development to connect Indonesia archipelago and the world, including:

- Site Survey, Land Acquisition & Construction Permits
- Geotechnical & Soil Investigation Survey
- Fiberization & Optical Access Network Installation
- Outside Plant (OSP) System Architect Design & Installation
- Main Switches Office (MSO) System Architect Design, Installation & Construction
- Command Center & Video Management System Architect Design, Installation & Construction
- IT & Electronic Low Voltage System Solution Architect Design & Installation
- Telecommunication Engineering & Construction
- Telecommunication & IT Infrastructure Supply



# SITE SURVEYS, SITAC & PERMITS

P.T Amarta Jaya Telekomindo also provide site survey, soil investigation, land acquisition and land development schemes permits. Concurrently, this implied to our telecommunications projects in Central Java, East Java, North Sumatra, Bangka Belitung, Kepulauan Riau, Banten, DIY, etc. which include mapping, volumetric analysis, geotechnical engineering survey, construction management, project monitoring and control, as well as involving various kind of equipment such as the latest GPS, CAD, infra-red, laser equipment, etc. A high-quality service helps us maintain portfolio of longstanding clients. Deployment of highly professional attention will minimize the risks and ensure multi dimensional control.

**Survey & Soil investigation**



**Site Permit**



**Bowlpank**





# CIVIL WORKS

P.T. Amarta Jaya Telekomindo provide telecommunication infrastructure network roll out services package from site survey, design, construction and tower erection including the respective supporting facilities such as telecommunication equipment shelter and Main Switches Office (MSO). Our engineering resources experiences and competencies jointly with multi-expertise technicians and professionals are highly capable to create a turnkey solution techniques with multi level partners.

The civil works for 72 m CME towers are of green field type with permanent shelters built for its facilities and equipment. These types are one of the projects that we are currently working on. The greenfield CME towers are of single tower that require more space and usually located in the rural area or in the mountain. Most of the construction sites for the tower are also scattered in several areas, including Yogyakarta, Banten, East Java, Natuna Islands, North Sumatra, Central Java, East Java, etc.



Soil Investigation



Tower Ready Integration



Tower Foundation



Bore Pile



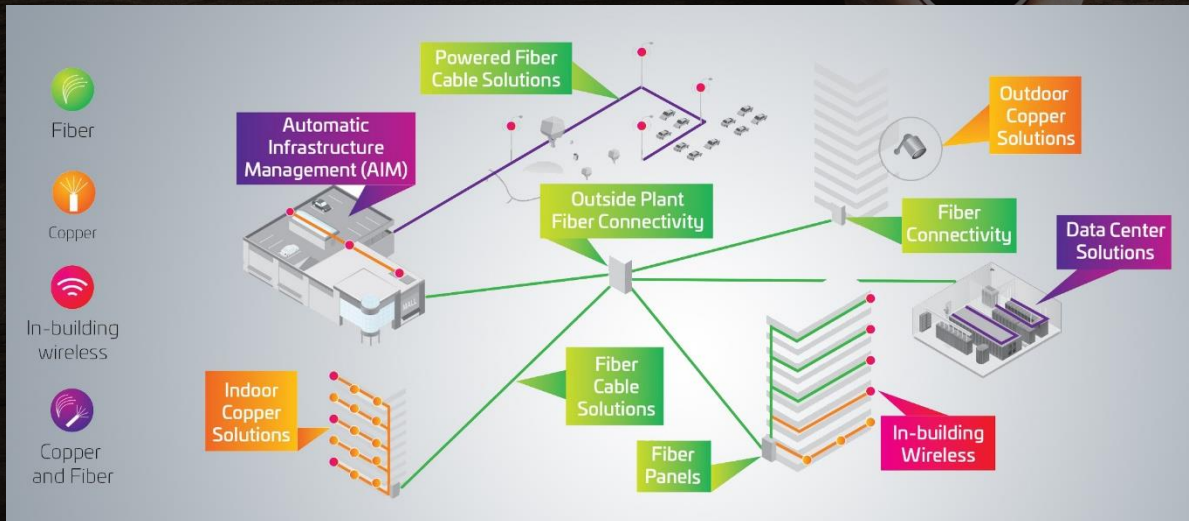
Permanent Shelter



Fence & Yard Work



# OUTSIDE PLAN (OSP)



PT Amarta Jaya Telekomunikasi provides construction services of Fibre Optic Network Cables and supporting infrastructure (such as conduit, cabinets, towers, poles, etc.), and any associated hardware located between Main Switching Office to customer premises as illustrated:

Fibre optic cables for OSP may be laid by means of the following techniques:

- Aerial Cables
- Horizontal Directional Drilling
- Mini and Micro Trenching
- Trenching and Ducting
- Direct Buried Cables
- Mauling



Associated OSP hardware must be either protected from the elements or constructed with materials suitable for exposure to the elements. Installation of the OSP elements often require construction of significant physical infrastructure, such as underground vaults. Cabling used in OSP must be protected from electrical disturbances caused by lightning or voltage surges due to electrical shorts or induction. P.T Amarta Jaya Telekomindo have much of the experience to construct and install all perfectly.



# FIBERIZATION & OPTICAL ACCESS NETWORK INSTALLATION

Constructed over 3,000 km of aerial and ducting cables in Jakarta, Central Java, East Java, North and Central Sulawesi for telecommunication operators, multimedia service providers and large enterprises to support super-fast internet and data network through POPs (point of presences) with Metro-E technology, and FTTX Infrastructure.



Pulling Micro duct



Rack Installation



Telco Switch Terminal



Test OTDR



Cable Ducting Excavation



Cable Ducting Construction



Cable Installation



Manhole Preparation



Pole Erection



Pulling Aerial Cable



Joint Closure Installation



Splicing Cable on Cloure



# IT & ELECTRONIC LOW VOLTAGE SYSTEM

A fast development of IT and Telecommunication technology, now building automation system is readily available and become a common practice which can be adopted for housing, hotels, apartments, offices, and hospitals, etc. Building automation begins with our innovative in building operation and management, including power management and surveillance systems which enable integrated intelligent buildings that inspire occupant productivity and deliver optimal energy and operational efficiency in a safely manner. There are many advantages to using building automation system such as scheduled maintenance, cost-efficient, energy efficient, & continues reports.

We have a highly professional competency in developing an integrated building automation system, including:

1. Electrical Protection and Control
2. Home Automation
3. Home Security
4. Installation Material and System
5. Light Switches and Electrical Sockets
6. Network Infrastructure and Connectivity
7. Surge Protection and Power Conditioning
8. Uninterruptible Power Supply (UPS)
9. Remote sensing & Connectivity





CCTV, also known as **video surveillance**, is the use of video cameras to transmit a signal to a specific place, on a set of monitors, use for security in public area or workplace such as Supermarket, Office, Hotel, Warehouse, Factory, Housing Estate, etc.

CCTV camera can be installed both indoor and outdoor. There are various types of design and specifications, such as infrared camera, programable zoom camera, standard camera, spy camera, board camera, etc.

In industrial plants or public places, CCTV surveillance system may be designed and equipped as Video Management System (VMS) surveillance to analyse all the objects captured, and profiling each of them to be observed and alarmed accordingly as part of the central control room or command centre video analytic process. for example when the environment is not suitable for humans. CCTV systems may operate continuously or only as required to monitor a specific event.

A more advanced form of CCTV, utilizing digital video recorders (DVRs), provides recording for certain time, with a variety of quality and performance options and extra features (such as motion detection and email alerts). More recently, decentralized IP cameras, perhaps equipped with megapixel sensors, support recording directly to network-attached storage devices, or internal flash for completely stand-alone operation.

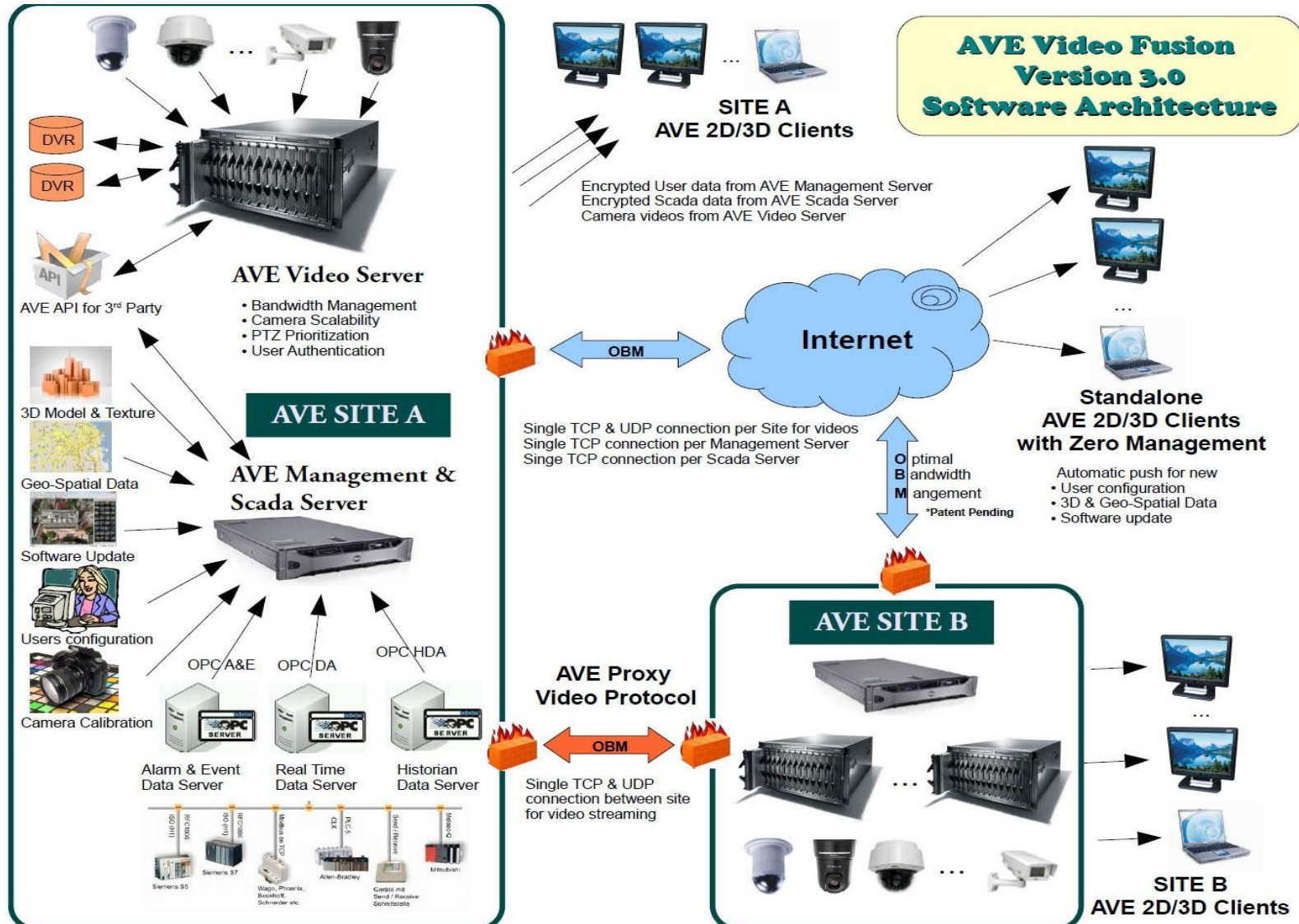
Broad range of CCTVs or Video Surveillance System, DVR, Central Control Room, and Video Management System (VMS) are all available at PT Amarta Jaya Telekomindo.

# CCTV SUPPLY & INSTALLATION





# VIDEO MANAGEMENT SYSTEM DESIGN & INSTALLATION



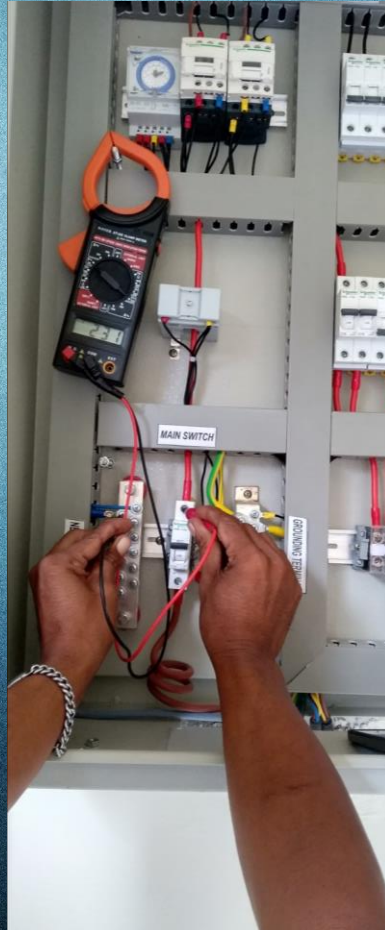


# COMMAND CENTER SYSTEM DESIGN, CONSTRUCTION & INSTALLATION





# TELECOMMUNICATION ENGINEERING DESIGN & CONSTRUCTION CME-TOWER

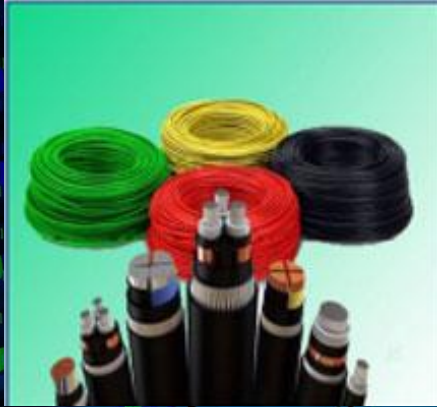




# TELECOMMUNICATION & IT EQUIPMENT SUPPLY



Duct Cable G652D



HDPE



ACPDB



ODC - Cabinet



OTB 248C



PATCH-CORD



CLOSURE



DC POWER SYSTEM & SOLAR PANEL



# FIBER OPTIC CABLES SUPPLY



Through P.T Communication Cable System Indonesia Tbk. a leading Fiber Optic Cables Manufacturer and as part of our group. We are readily provide a wide range of Fiber Optic Cables for telecommunication, IT infrastructure, and multi media communication. These include:

1. Outdoor cables : More often used for ducting & aerial backbone networks, Last mile / access
2. Indoor cables : More often used for FTTB/FTTX/FTTH infrastructures
3. Special cables : More often used for special cases, such as submarine
4. HDPE : Subduct, Microduct, ODP
5. Accessories cables : OTB, Patchcord, Pigtail
6. Outdoor Cabinet : ODC, ACPDB, DCPDB
5. Power System DC : Solar Panel



# IT EQUIPMENT SUPPLY

Infrastructure IT Product :

1. Indoor Rack : Close Rack 42U
2. Switch & Router
3. CCTV & Accessories
4. Wi-fi & Access Point
5. Wireless Broadband
6. Application Solution-RFID
7. Others IT Equipment, etc.



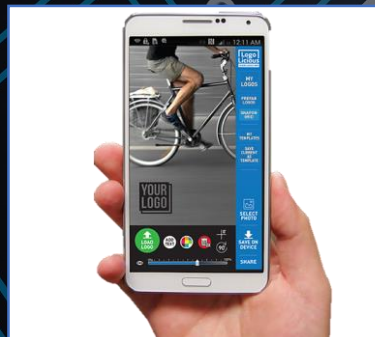
CCTV & Accessories



WIFI & Access Point



Switch & Router



Application Solution



Smartcard -RFID



Rack Server Indoor



# PROJECT COVERAGE

P.T Amarta Jaya Telekomindo, known as AJT has proved a remarkably reputation to serve customers. Our company has the latest and most advanced technology solution that match the rapid development of multimedia access. AJT is delighted to deliver reliable and innovative Projects both as Contractor and Supplier that leverage our customer value proposition.

Creating a value that makes differences and sustain profitable growth through innovation, integrity and commitment.







## LEGALITY & ADDRESS:

DOMICILE NO. 150/27.1BU/31.73.07.1001/071.562/e/2018

P.T AMARTA JAYA TELEKOMINDO  
GRAND SLIPI TOWER 41ST FLOOR  
JALAN LET.JEND. S. PARMAN KAV 22-24  
PALMERAH  
JAKARTA 11480

PHONE : 021-2986-5963  
FAX : 021-2986-5984  
EMAIL : [info@ajtel.co.id](mailto:info@ajtel.co.id)

NPWP: 85.035.896.1-031.000

REGISTERED CERTIFICATE: S-3356KT/WPJ.05/KP.0103/2018

ESTABLISHMENT DEED: NO.42 DATED 23RD MAY 2018

YUDICIAL VERIFICATION LETTER:  
NO.AHU-0075230.AHA.01.11THN 2018 DATED 31ST. MAY 2018





PT AMARTA JAYA TELEKOMINDO



PT AMARTA JAYA TELEKOMINDO



PT AMARTA JAYA TELEKOMINDO

